



Instruction Manual

Learning Tablet



VTech understands that a child's needs and abilities change as they grow and with that in mind we develop our toys to teach and entertain at just the right level...

vtech Baby

Toys that will stimulate their interest in different textures, sounds and colours

I am...

...responding to colours, sounds and textures

...understanding cause and effect

...learning to touch, reach, grasp, sit-up, crawl and toddle

Birth-36 months



Pre-School

Interactive toys to develop their imagination and encourage language development

I want...

...to get ready for school by starting to learn the alphabet and counting

...my learning to be as fun, easy and exciting as can be

...to show my creativity with drawing and music so my whole brain develops

3-6 years



Electronic Learning Computers

Cool, aspirational and inspiring computers for curriculum related learning

I need...

...challenging activities that can keep pace with my growing mind

...intelligent technology that adapts to my level of learning

...National Curriculum based content to support what I'm learning at school

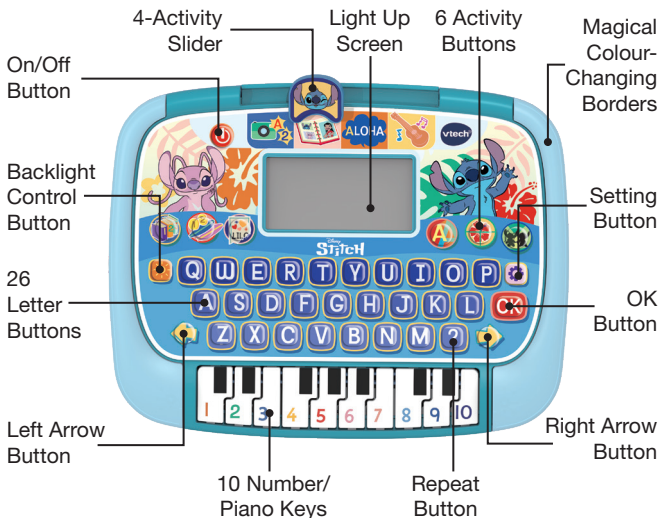
4-10 years



To learn more about this and other VTech® products, visit www.vtech.co.uk

INTRODUCTION

Thank you for purchasing the **Disney Stitch Learning Tablet!** Play fun educational activities with Stitch and Lilo as you enjoy the playful animations, sound effects and voice. The backlit screen and colour-changing light borders further enhance the experience as children engage with 4 fun games and 6 learning activities that help to reinforce language, maths, music skills and so much more.



INCLUDED IN THE PACKAGE

- Disney Stitch Learning Tablet
- Quick Start Guide

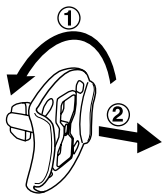
WARNING:

All packing materials such as tape, plastic sheets, packaging locks, removable tags, cable ties, cords and packaging screws are not part of this toy and should be discarded for your child's safety.

NOTE:

Please save this Instruction Manual as it contains important information.

Unlock the packaging locks:

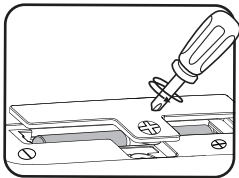


- ① Rotate the packaging lock 90 degrees anticlockwise.
- ② Pull out the packaging lock.

GETTING STARTED

BATTERY INSTALLATION

1. Make sure the unit is turned **OFF**.
2. Locate the battery cover on the base of the unit. Use a screwdriver to loosen the screw. Then, remove the cover.
3. If used batteries are present, remove this battery from the unit by pulling up on one end of the battery.
4. Install 2 new AA (LR6/AM-3) batteries following the diagram inside the battery box. (The use of new alkaline batteries is recommended for maximum performance).
5. Replace the battery cover and tighten the screw to secure.



WARNING:

Adult assembly required for battery installation.
Keep batteries out of reach of children.

IMPORTANT: BATTERY INFORMATION

- Insert batteries with the correct polarity (+ and -).
- Do not mix old and new batteries.
- Do not mix alkaline, standard (carbon-zinc) or rechargeable batteries.
- Only batteries of the same or equivalent type as recommended are to be used.
- Do not short-circuit the supply terminals.
- Remove batteries during long periods of non-use.
- Remove exhausted batteries from the toy.
- Dispose of batteries safely. Do not dispose of batteries in fire.

RECHARGEABLE BATTERIES:

- Remove rechargeable batteries (if removable) from toy before charging.
- Rechargeable batteries are only to be charged under adult supervision.
- Do not charge non-rechargeable batteries.

Disposal of batteries and product



The crossed-out wheellie bin symbols on products and batteries, or on their respective packaging, indicates they must not be disposed of in domestic waste as they contain substances that can be damaging to the environment and human health.



The chemical symbols Hg, Cd or Pb, where marked, indicate that the battery contains more than the specified value of mercury (Hg), cadmium (Cd) or lead (Pb) set out in the Batteries and Accumulators Regulation.

The solid bar indicates that the product was placed on the market after 13th August, 2005.

Please dispose of your product and batteries responsibly.

In the UK, give this toy a second life by disposing of it at a small electricals collection point* so all of its materials can be recycled.

Learn more at:

www.vtech.co.uk/recycle

www.vtech.com.au/sustainability

* Visit www.recyclenow.com to see a list of collection points near you.

PRODUCT FEATURES

1. ON/OFF Button

To turn the unit on, press the **On/Off Button**. Press the **On/Off Button** again to turn the unit off.

2. MAGICAL COLOUR-CHANGING BORDERS

Four vibrant border colours including red, blue, pink and purple glow as you play.



3. LIGHT UP SCREEN

The backlight colour of the screen can be adjusted from blue to purple, pink or red.



4. 4-ACTIVITY SLIDER

Slide the **Slider** to choose any of the 4 activities shown.

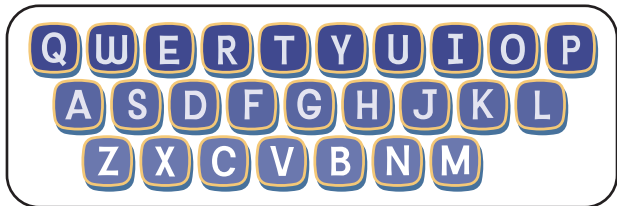
5. 6 ACTIVITY BUTTONS

Press one of the **Activity Buttons** to choose any of these 6 activities.



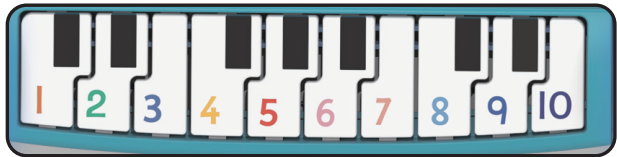
6. LETTER BUTTONS

Press the **Letter Buttons** to learn letters or to answer letter-related questions.



7. NUMBER/PIANO KEYS

Press the **Number/Piano Keys** to learn numbers, to answer number-related questions or to play the musical notes.



8. ARROW BUTTONS



Press the **Arrow Buttons** to navigate on the screen or to select an option.

9. OK BUTTON

Press the **OK Button** to confirm a selection.

10. BACKLIGHT CONTROL BUTTON

Press the Backlight Control Button to change the backlight colour of the screen between blue, pink, purple and red, or to turn the backlight off.

11. REPEAT BUTTON

Press the **Repeat Button** to repeat the game instruction or question.

12. SETTINGS BUTTON

Press the **Settings Button** to enter the Settings menu. From here you can choose to turn the background music on or off, switch the magical colour-changing borders on or off, or to adjust the volume and screen contrast. Press the **Arrow Buttons** to make a selection and then press the **OK Button** to confirm.

13. AUTOMATIC SHUT-OFF

To preserve battery life, the unit will automatically turn itself off after several minutes of inactivity. The unit can be turned on again by pressing the **On/Off Button**. The unit will also automatically turn off when the batteries are very low. A warning will be displayed on screen as a reminder to change the batteries.

NOTE

If the unit turns itself off or if the lights fade during play, please install a new set of batteries.

TO BEGIN PLAY

- Press the **On/Off Button** to turn the unit On. A short animation will play and you will be asked to select an activity.
- Slide the Activity Slider to choose one of the 4 related activities or press one of the **6 Activity Buttons** directly to play one of those activities.

ACTIVITIES

1. Lilo's Camera



Lilo likes taking photos. Press any of the **Letter Buttons** to learn the alphabet and words. Press the **Number/Piano Keys** to learn numbers 1-10.



2. Photo album



Lilo and Stitch are looking through the photo album. Press the **Arrow Buttons** to flip through the photos, then press the **OK Button** to listen to a description of the photo.



3. Tell the Truth



Pleakley is thinking of something... Press the **Letter Buttons** to type the message and avoid Fibber's alarm!



4. Music Time



Stitch is playing ukulele. Press the **Number/Piano Keys** to play ukulele notes, or press the **Letter Buttons** to hear fun sounds.



5. Book Sorting

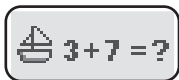
Stitch is reading books at Nani's house. The order of the books is messed up.

Press the **Arrow Button** to select the correct book according to the number order, then press the **OK Button** to confirm.



6. The Rental Hut

Lilo is hanging out with her sister Nani while she is working at the rental hut. There will be a variety of questions related to the rental hut that you will need to help with. Press the **Arrow Buttons** to select the answer then press **OK Button** to confirm, or press the **Number/Piano Keys** to answer directly.



7. Mend the Poster

The posters at the Aloha Animal Rescue centre have been damaged. Press the **Arrow Buttons** to select the correct piece then press the **OK Button** to confirm, or press the **Letter Buttons** to answer directly.



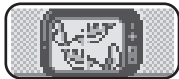
8. What is this

Under Jumba's reducer ray effect, Lilo and Stitch become tiny and everything appears so big that they can only see part of it! Press the **Letter Buttons** or **Number/Piano Keys** to guess what they are looking at.



9. Television Time

Lilo is watching TV, but the image on screen is mixed up. Rearrange the pieces and place them in the correct positions. Press the **Arrow Buttons** to choose then press the **OK Button** to confirm the piece to swap.



10. Action Match

The character on the left of the screen will make a series of movements to either the left or the right. Press the **Arrow Buttons** to control your character on the right side of the screen and repeat the sequence. The first sequence has 3 steps. Further steps will be added as you continue to follow the sequences correctly. Master an 8 step sequence to win the game.



CARE & MAINTENANCE

1. Keep the unit clean by wiping it with a slightly damp cloth.
2. Keep the unit out of direct sunlight and heat source.
3. Remove the batteries when the unit is not in use for an extended period of time.
4. Do not drop the unit on hard surfaces and do not expose the unit to moisture or water

TROUBLESHOOTING

If for some reason the unit stops working, please follow these steps:

1. Turn the unit **Off**.
2. Interrupt the power supply by removing the batteries.
3. Let the unit stand for a few minutes, then replace the batteries.
4. Turn the unit **On**. The unit should now be ready to use again.
5. If the unit still does not work, install a new set of batteries.

CONSUMER SERVICES

Creating and developing **VTech®** products is accompanied by a responsibility that we at **VTech®** take very seriously. We make every effort to ensure the accuracy of the information, which forms the value of our products. However, errors sometimes can occur. It is important for you to know that we stand behind our products and encourage you to call our Consumer Services Department with any problems and/or suggestions that you might have. A service representative will be happy to help you.

UK Customers:

Phone: 0330 678 0149 (from UK) or +44 330 678 0149 (outside UK)
Website: www.vtech.co.uk/support

Australian Customers:

Phone: 1800 862 155
Website: support.vtech.com.au

NZ Customers:

Phone: 0800 400 785
Website: support.vtech.com.au

PRODUCT WARRANTY/ CONSUMER GUARANTEES

UK Customers:

Read our complete warranty policy online at vtech.co.uk/warranty.

Australian Customers:

VTECH ELECTRONICS (AUSTRALIA) PTY LIMITED –
CONSUMER GUARANTEES

Under the Australian Consumer Law, a number of consumer guarantees apply to goods and services supplied by VTech Electronics (Australia) Pty Limited. Please refer to vtech.com.au/consumerguarantees for further information.

**Visit our website for more
information about our products,
downloads, resources and more.**

www.vtech.co.uk
www.vtech.com.au

